

# ASSIST: Attitudes to Shale gas in Space and Time

UKUH annual conference

Patrick Devine-Wright

September 17<sup>th</sup> 2020

<http://blogs.exeter.ac.uk/assist/>



# Project team

Patrick Devine-Wright (PI, Exeter)

Stacia Ryder (Post-doc, Exeter)

Lorraine Whitmarsh (Col, Bath)

Jennifer Dickie (Col, Stirling)

Adam Varley (Post-doc, Stirling)

Phil Bartie (Col, Heriot-Watt)

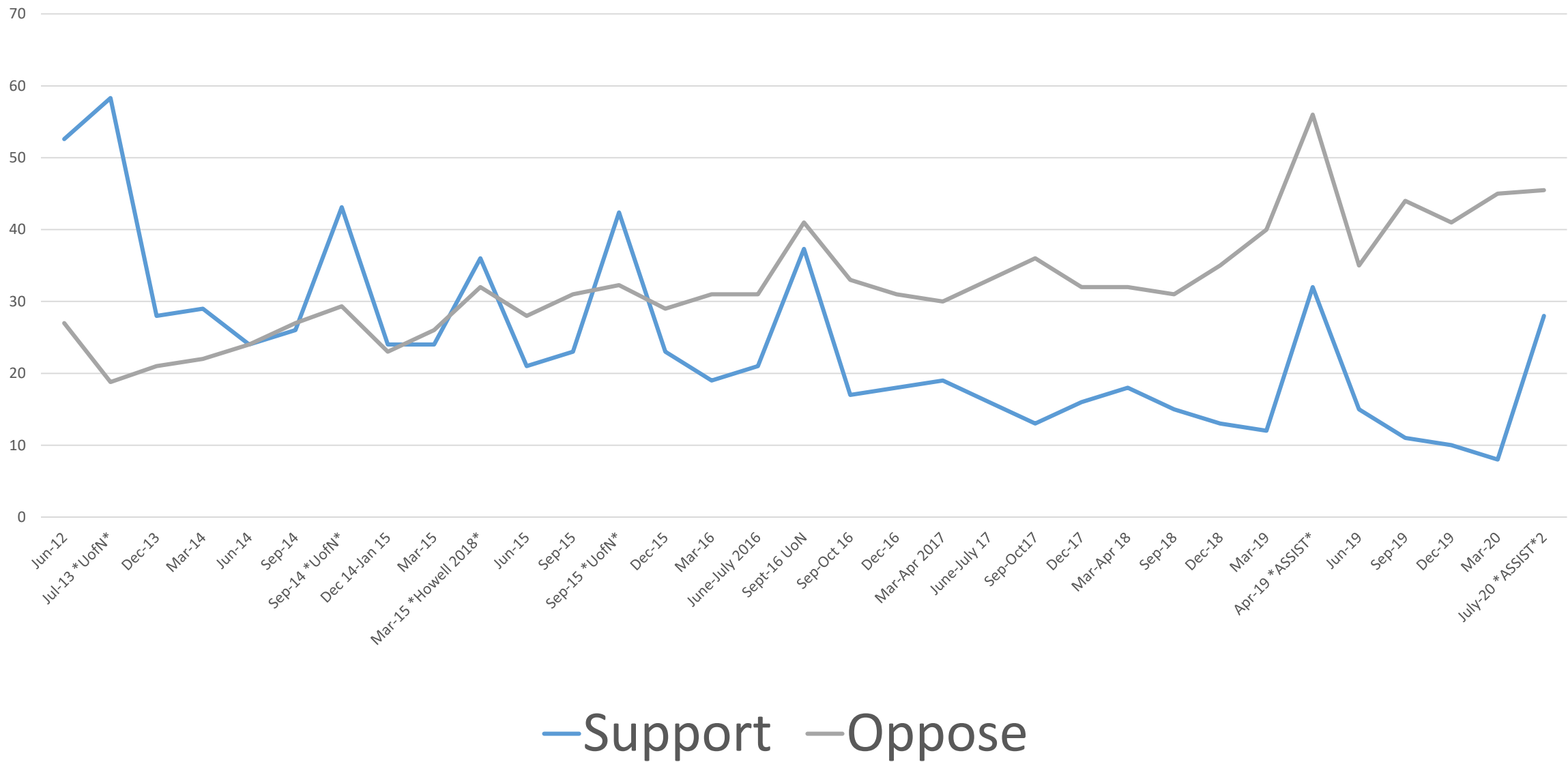
Darrick Evensen (Col, Edinburgh)

# Summary

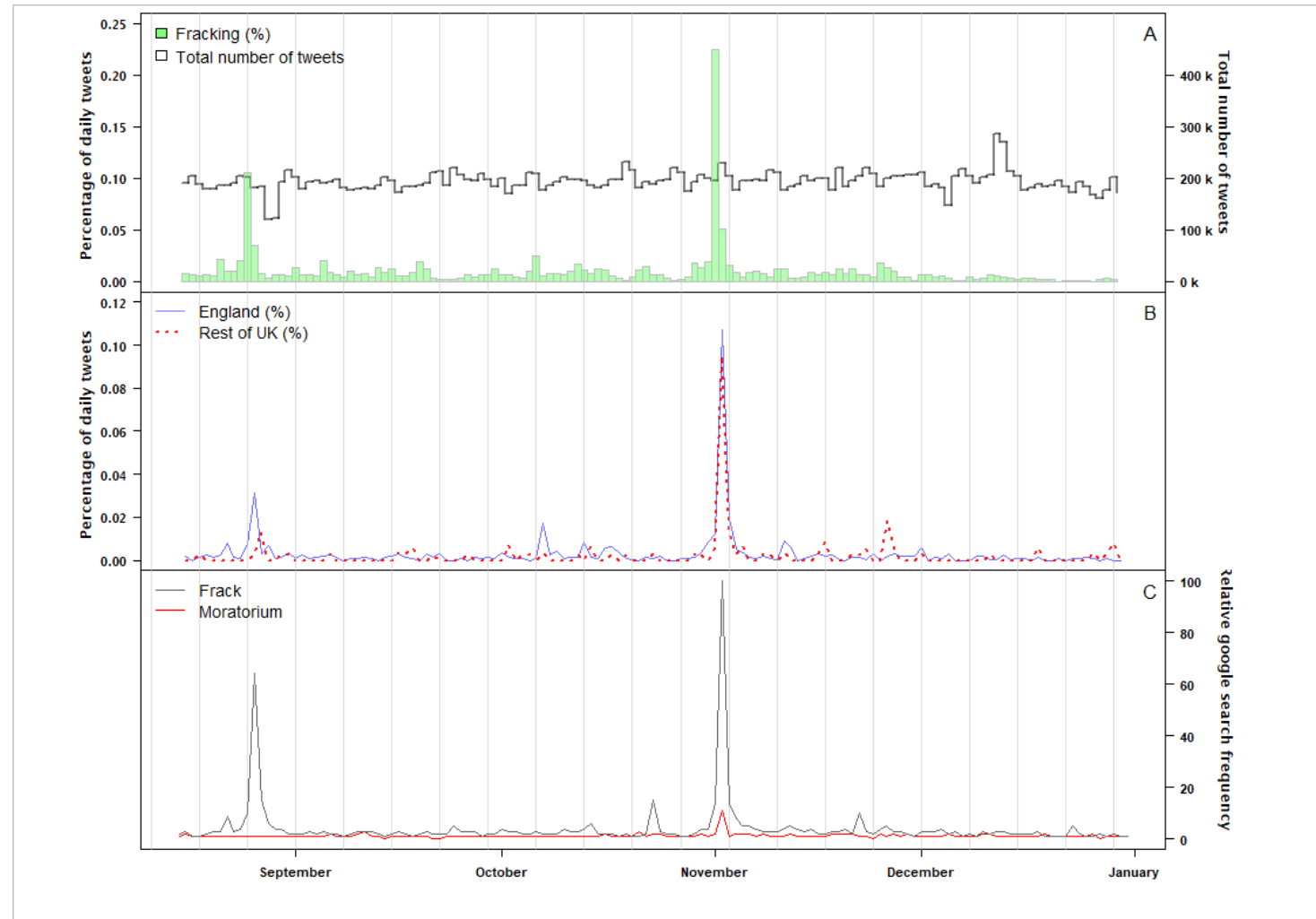
- ***What we aim to understand:***
  - Whether public perceptions of shale gas change over time
  - Whether public perceptions vary across space across the UK
  - Capturing local, lived experiences in areas of shale gas projects
- ***What new datasets we are drawing on:***
  - National surveys with same participants over time (Wave 1 April 2019; Wave 2 July 2020)
  - Social media data (Twitter data 2015-2020, 317m tweets)
  - Local ethnography and surveys (Lancs/Yorkshire case studies)

# Using surveys to track perceptions of shale gas over time

## (2012-2020)

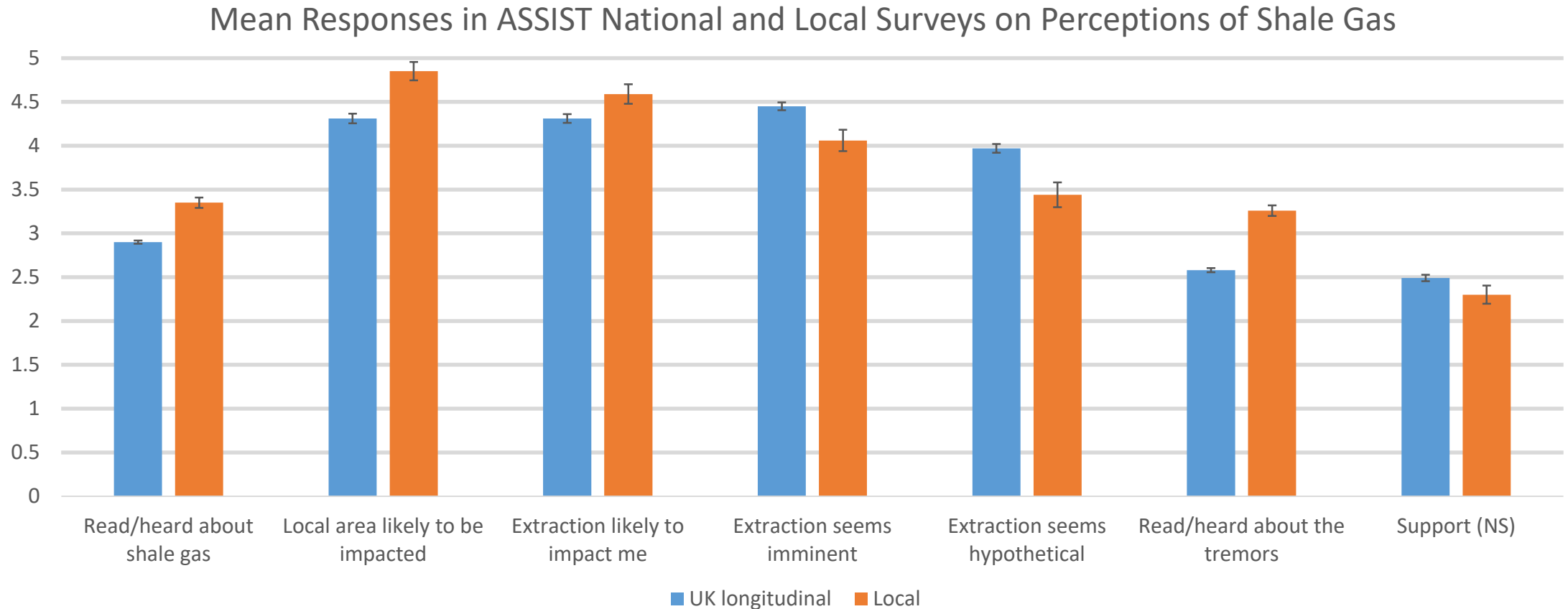


# Using social media to track perceptions over time: responses to the Moratorium, August–December 2019



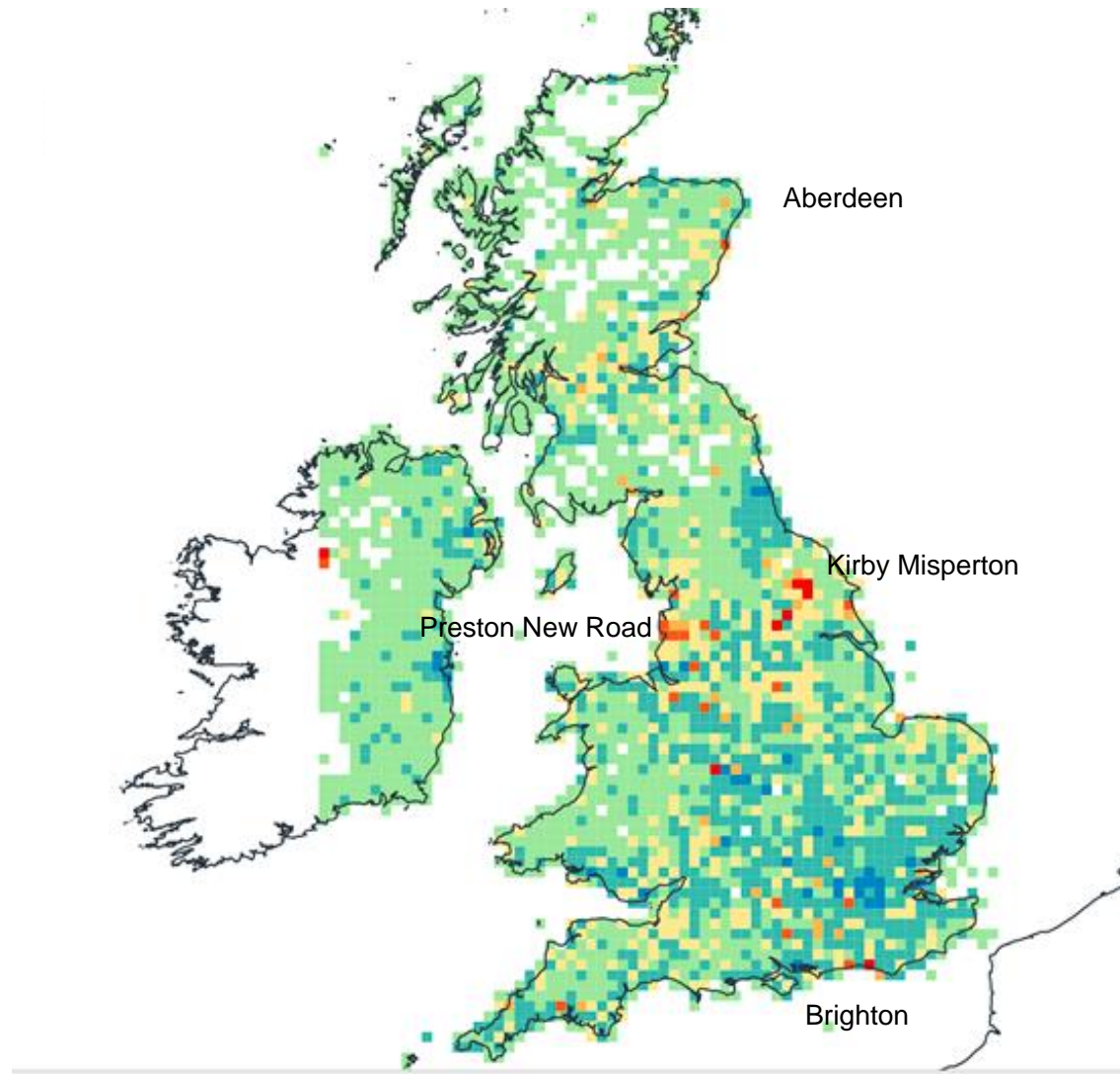
A) The total number of daily tweets recorded (second axis) alongside the percentage of those tweets with key terms 'frack', 'shale gas' or 'hydraulic frac';  
B) Percentage of 'moratorium' related tweets within England (blue) and the rest of the UK (red);  
C) Google trends data for key terms 'frack' and 'moratorium'. All data is presented between the 15th of August 2019 and 31st of December 2019.

# Comparing national & local (Altcar) survey data (July-August 2020)



Local respondents have heard notably more about shale gas extraction, and about earth tremors associated with shale gas extraction. They are more likely to perceive SG as spatially and socially close. They are less likely to see it as temporally close or to see it as abstract. The local sample's mean level of support is lower than the level of support in the UK longitudinal sample, but the difference is too small to reach statistical significance.

# Comparing social media across space



**Sustained Social Media  
Activity on shale gas**

Chi-squared Expectation  
Surfaces

1 year windows incremented  
monthly

RED = continued longer  
interest in shale gas  
related matters.

# Understanding local lived experiences

## **Disruption to place attachment**

- *Without a shadow of a doubt, and I've said this from the very beginning, Woodsetts will be deemed to be an industrial village. It will no longer be a rural village that we are all so blessed to be living in. I feel quite emotional about that. I feel very, very, very strong about maintaining and retaining its beauty and its peace and its calm. You have to have that in villages. You can't have everywhere being industrial, it's just ridiculous.*

## **Collective action, resistance & trauma**

- *Sleepless nights, worrying, the financial cost, personal financial cost, and everything else that's come with it. It's been massive. Massive. To the point where, some members of the group have become ill.*

## **Strengthening of community ties**

- *And, actually, that's the one positive that's come out of this. When I talked about community cohesion before, the way in which this has brought together people who had never interacted before into the same room, and got them working together, and got people out to events that we hosted...that has been the real positive out of all of this.*



# Thank you

[p.g.devine-wright@exeter.ac.uk](mailto:p.g.devine-wright@exeter.ac.uk)

<http://blogs.exeter.ac.uk/assist/>